



---

# Jasubhai Aerospace, Defense and Energy (JADE)

AS 9100D & ISO 9001:2015 CERTIFIED COMPANY

# Who we are and What we do?

---

1 Family owned and operated by the Jasubhai Group, JADE was established in 1995 with a vision to serve industries that required highly precision machined parts and assemblies. We have developed a reputation with clients as an outstanding source for advanced machining and assembly service. We have been honoured to qualify and meet the critical needs of many leading companies both in India and overseas, most of whom we continue to serve until now since inception.

---

2 We are **AS9100D & ISO9001:2015** certified to support a variety of market applications in industries including Aerospace, Defence, Energy, Industrial Applications and more. Our clients are geographically spread across India, Europe, US and Asia.

---

3 We offer highly precision components made from **Sand, Investment, Pressure die Castings & Critical machined** components as per customer drawings and specifications. We are able to facilitate a number of post manufacturing processes and services, either in-house or via our trusted and approved partners, to support the needs of our customers

---

# Our Philosophy: Doing Business, the Right Way

## Service



We understand that a quality product delivered late has little value to our Customer. We focus on understanding how to service our Customer's requirements and deliver a quality product the first time, every time. Whether it is turnaround time, packaging or special requests, we are here to serve our Customer's needs all day, every day

## Quality



Our reputation and the success of our business are dependent on the quality of service we provide. JADE's quality management system is registered to the AS9100D, ISO 9001: 2015 standards and is certified annually. This quality management system ensures that we consistently provide unparalleled quality and unmatched service that meets or exceeds Customer expectations

## Value



Every Customer has a different perspective on value. That's why we have made it our business to understand our Customers and focus on meeting their needs beyond quality and service. It is this approach that ensures our Customers keep coming back, and it's how we deliver value

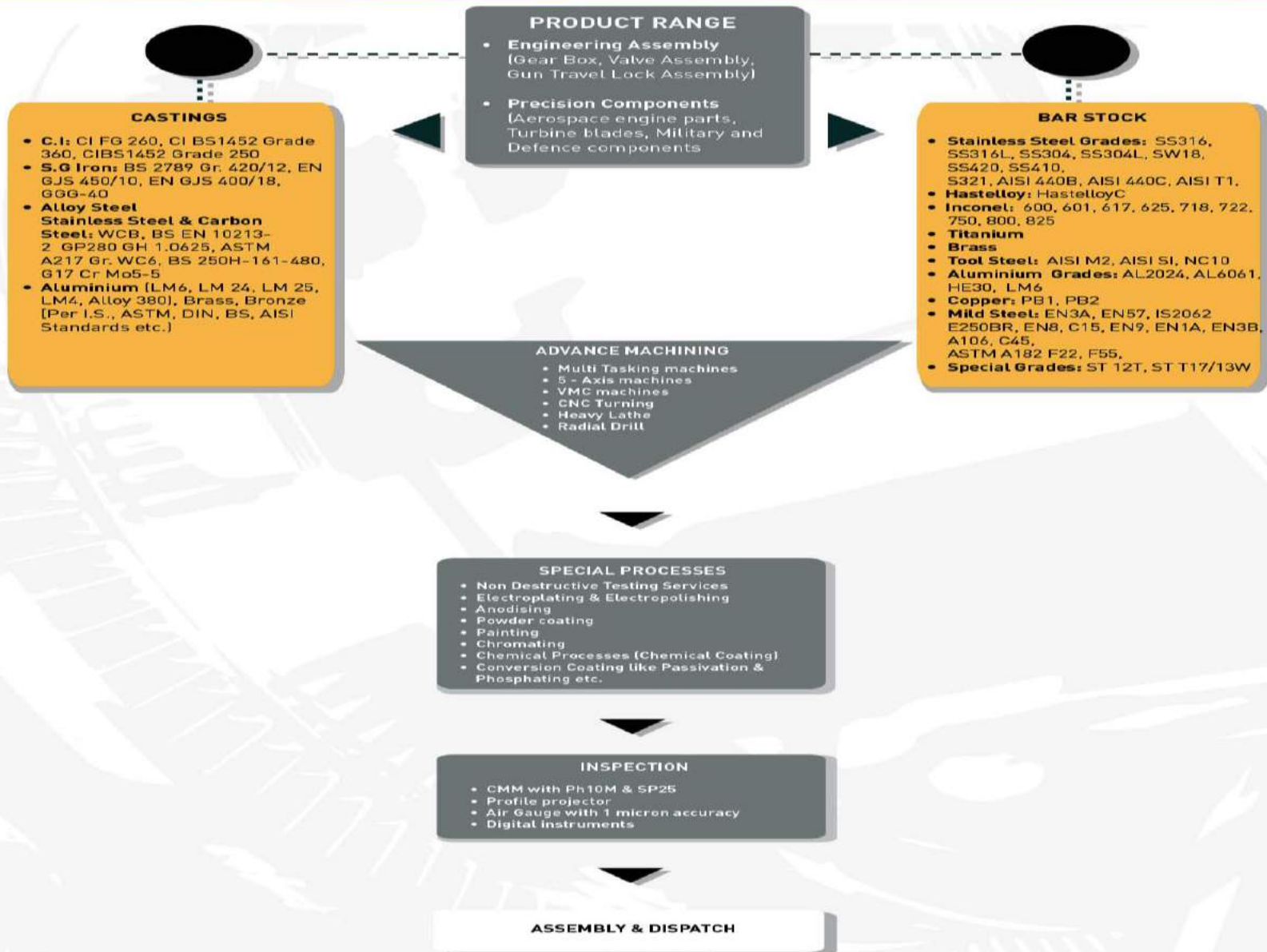
# Our Capabilities

Manufacturing facility	<ul style="list-style-type: none"><li>• AS9100D and ISO 9001:2015 certified for Aerospace, Defense, Power and Engineering applications</li><li>• 6998 sq mtr facility at Vatva, Ahmedabad in Gujarat, India</li></ul>
Machines	<ul style="list-style-type: none"><li>• <b>Five Axis (including 2 DMG Mori multitasking machines)</b></li><li>• Four Axis</li><li>• Three Axis</li><li>• Turning centers</li><li>• Heavy lathes</li><li>• Radial Drill Machines</li><li>• <b>VMC Machines (one with 4+1 Axis &amp; Other 3 Axis machine with 1600 mm Machining capability)</b></li></ul>
Software	<ul style="list-style-type: none"><li>• Siemens Solid Edge ST7, Siemens NX10 &amp; AutoCAD 10</li></ul>
Measuring Capability	<ul style="list-style-type: none"><li>• CMM with PH10M &amp; SP25 Probe</li><li>• Profile Projector</li><li>• Surface tester</li><li>• Coating thickness tester</li><li>• Other Measuring Instruments</li></ul>
Quality Management	<ul style="list-style-type: none"><li>• FOD free area</li><li>• Proper preservation of components</li><li>• Implementation of risk management, project and configuration management</li><li>• Implementation of new ME documents for operations</li></ul>

# Raw Materials Handled

Products	Material Grades
<b>Bar Stock Components</b>	<ul style="list-style-type: none"> <li>• <b>Stainless Steel Grades:</b> SS316, SS316L, SS304, SS304L, SW18, SS420, SS410, SS321, AISI 440B, AISI 440C, AISI T1,</li> <li>• <b>Hastelloy:</b> HastelloyC</li> <li>• <b>Inconel:</b> 600, 601, 617, 625, 718, 722, 750, 800, 825</li> <li>• <b>Titanium</b></li> <li>• <b>Brass</b></li> <li>• <b>Tool Steel:</b> AISI M2, AISI SI, NC10</li> <li>• <b>Aluminium Grades:</b> AL2024, AL6061, HE30, LM6</li> <li>• <b>Copper:</b> PB1, PB2</li> <li>• <b>Mild Steel:</b> EN3A, EN57, IS2062 E250BR, EN8, C15, EN9, EN1A, EN3B, A106, C45, ASTA A182 F22, F55,</li> <li>• <b>Special Grades:</b> ST 12T, ST T17/13W</li> </ul>
<b>Investment Cast Components</b>	<ul style="list-style-type: none"> <li>• Alloy Steel,</li> <li>• Stainless Steel : DIN 1.4027, ASTM A351 Gr CF8M</li> <li>• Aluminium Alloy [Per ASTM, DIN, AISI Standard] etc.</li> </ul>
<b>Pressure Die Cast Components:</b>	<ul style="list-style-type: none"> <li>• <b>Aluminium Alloy:</b> LM6, LM24, LM25, LM4, Alloy 380.</li> </ul>
<b>Sand Cast Components Subassemblies / Assemblies (like Dome Valve, Gear Box, Travel Carriage &amp; Roller Cages etc.)</b>	<ul style="list-style-type: none"> <li>• <b>C.I. :</b> CI FG 260, CI BS1452 Grade 360, CIBS1452 Grade 250.</li> <li>• <b>S.G Iron,:</b> BS 2789 Gr. 420/12, EN GJS 450/10, EN GJS 400/18, GGG-40</li> <li>• <b>Alloy Steel,</b></li> <li>• <b>Stainless Steel &amp; Carbon Steel:</b> WCB, BS EN 10213-2 GP280 GH 1.0625, ASTM A217 Gr. WC6, BS 250H-161-480, G17 Cr Mo5-5.</li> <li>• Aluminium, Brass, Bronze [Per I.S., ASTM, DIN, BS, AISI Standards etc.]</li> </ul>

# Our Service Offering



# Major Clients

---



**WEHR**



GE Power



**Johnston**  
SWEEPERS



**AMETEK**<sup>®</sup>  
POWER INSTRUMENTS

**RMS** pumptools

**SEPCO**<sup>®</sup>  
Sealing Equipment Products Co., Inc.

Max AeroSpace 



**LARSEN & TOUBRO**

**TAL**

TAL MANUFACTURING SOLUTIONS LIMITED  
A TATA Enterprise

*Godrej*



- Clients across Aerospace & Defense, General Engineering, Power, Valves, Cryogenic and Sealing Equipment industries
- Geographies served include India, US, UK, Germany, Japan and South Africa

# Certification



UCB.F.12.03 2012-02

ZERTIFIKAT • CERTIFICATE • 認證證書 • СЕРТИФИКАТ • CERTIFICADO • CERTIFICAT



## CERTIFICATE

The Certification Body of  
TÜV SÜD AMERICA INC.

hereby certifies that

**JASUBHAI ENGINEERING PVT. LTD. -  
JADE DIVISION**  
64/A, Phase -I, GIDC Industrial Estate, Vatva,  
Ahmedabad, Gujarat, 382 445 India

has implemented a Quality Management System  
in accordance with:

**AS9100D and ISO 9001:2015**

The assessment was performed in accordance with the requirements of AS9100:2012-1. TÜV SÜD America Inc. is accredited under the International Aerospace Quality Group Industry Controlled Other Party Management System.

The scope of this Quality Management System includes:

**Manufacturing of Cast & Machined Components,  
Assemblies for Aerospace, Defense, Energy  
and Engineering Applications**

Certificate Expiry Date: April 17, 2020

Certificate Registration No: 981 14 6510

Issue Date: April 18, 2017

Reissue Date: June 15, 2018

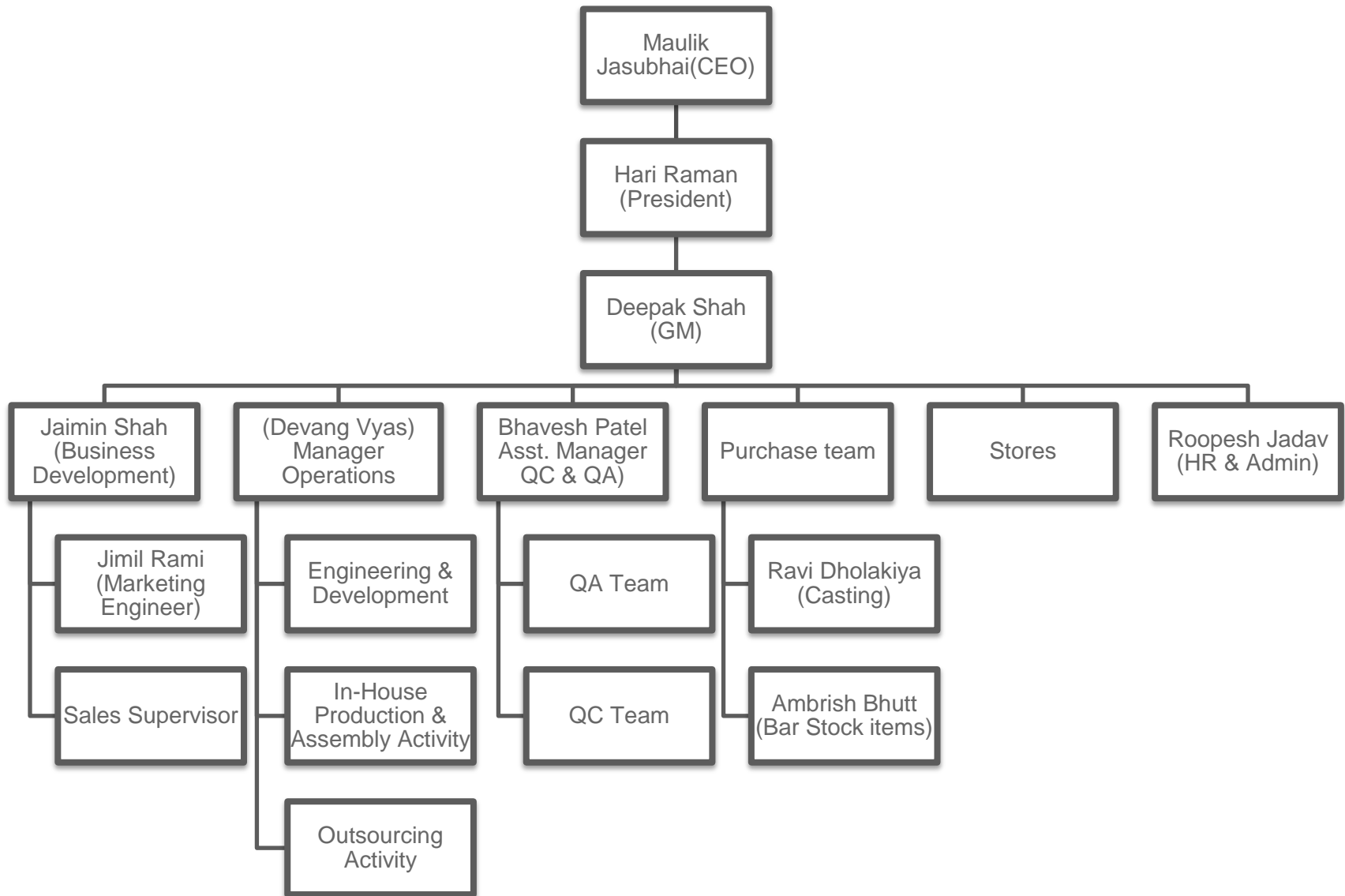


*Mark Alped*  
Mark Alped  
USA President, Business Assurance





# JADE – Organization Structure



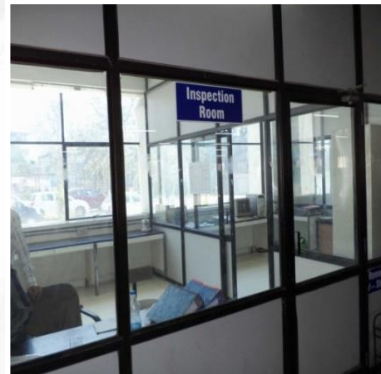
# Preview of Manufacturing Facility

---



**Machine Shop**

**Stores**



**Finished Good Area**

**Inspection Room**

**Conference**

# Preview of Manufacturing Facility



Multitasking Machines, with  $\varnothing$  500mm Turning Dia. & 800 mm Long Machining capability



**4+1 Axis Machine, 1000 X 600 X 600**    **3 Axis Machine, 800 X 400 X 400**

**CNC Turning,  $\varnothing$ 200 X 200 L**

# Preview of our New machines

---

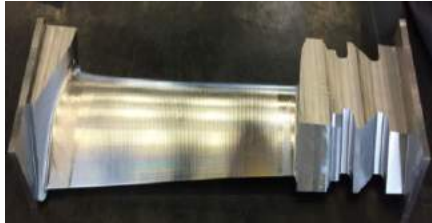


**3 Axis VMC Machine with**  
1500 mm X 700 mm X 650 mm

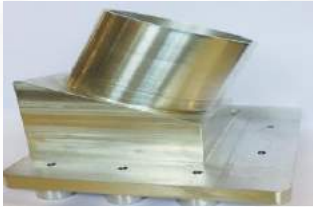
VMC Machine with 4 + 1 Axis of 320 diameter Rotary Table  
1000 mm X 600 mm X 600 mm



# Sample Developed Products



<b>Product</b>	Steam Turbine Blades
<b>Material</b>	ST 12T, ST T17/13W
<b>Max. Size</b>	Length: 500mm



<b>Product</b>	STRUT FITTING BOTTOM (ISRO)
<b>Material</b>	TI6AL4V
<b>Max. Size</b>	110 mm X 105 mm X 100 mm



<b>Product</b>	Critical Bar Stock Components
<b>Material</b>	SS, MS, Hastelloy C, Inconel, Titanium, Brass, Aluminium, Tool Steel, Copper etc.
<b>Max. Size</b>	Dia.: 5mm to 200mm Length: 10mm to 1000mm



<b>Product</b>	Electronic Housing
<b>Material</b>	CF8 / SS316L (Investment Casting)
<b>Max. Size</b>	OD: 63.5mm ID: 59.7mm & Length: 102.3mm

# Sample Developed Products



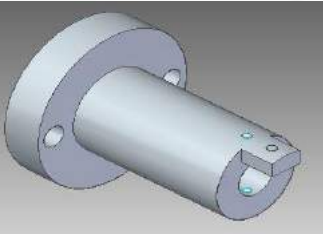
<b>Product</b>	Fabricated Main Shaft
<b>Material</b>	EN8
<b>Max. Size</b>	OD: 177.72mm & Length:317.51mm



<b>Product</b>	Valve Body
<b>Material</b>	G17 Cr Mo5-5 as per EN-10213
<b>Max. Size</b>	3" 600#



<b>Product</b>	Chain Wheel
<b>Material</b>	C.I BS1452 Gr. 260 (GG25)
<b>Max. Size</b>	352mm x 96mm



<b>Product</b>	Drill Jig Fixture
<b>Material</b>	EN8
<b>Max. Size</b>	Dia: 25mm & Length: 50mm

# Sample Developed Assemblies

---



<b>Product</b>	Dome Valve Assembly
<b>Material</b>	C.I Gr. 250
<b>Max. Size</b>	Dia.: 50mm, 80mm, 100mm 125mm, 150mm, 200mm, 250mm, 300mm

---



<b>Product</b>	Gear Box Assembly
<b>Material</b>	CI BS: 1452 Gr 250
<b>Max. Size</b>	Assembly of Various components

---



<b>Product</b>	Valve Internal Assembly
<b>Material</b>	SS410, SS431, Bronze.
<b>Max. Size</b>	Assembly of Various components

---

# Sample components and sub assemblies for select OEMs/ Tier 1 suppliers under development

---





# In Summary...

---

- We are AS9100D & ISO9001:2015 Certified to meet the requirements of Aerospace, Defense & Energy Applications
- We are currently working with Aerospace and Defence OEMs/Tier 1 suppliers from India and overseas
- While we specialise in precision engineering, we have dedicated vendors for raw materials like castings, bar stock & all the types of special processes to provide end to end support to our clients
- We have worked with a variety of raw materials including Stainless steel, Inconel, Titanium, Brass, Copper, Aluminum alloys and Alloy/Special grade steel
- With our current capabilities we are well positioned as a vendor for small and medium size precision components measuring  $\varnothing 10$  mm to  $\varnothing 800$  mm (in diameter) and from 20 mm to 1000 mm in length
- We are very excited about the growth opportunity and are willing to invest resources to support the “Make In India” initiative

**THANK YOU**